

OVAPACK



The Ovapack Farmpackers have been developed in close conjunction with egg producers. They are engineered for very gentle egg handling with a simple compact design that has low labour requirement and very user friendly operation.

Features & Specifications:

1. Compact layout only 2.8m long for 6 row packer with left or right hand version available.
2. Layout with reverse flow packing lane and takeaway conveyor located at operator position for convenient stacking and quality control with easy access to packed eggs.
3. Positive orientation with turn bars and grippers gives very gently egg handling and very high % points down on all egg sizes.
4. Only 1 variable speed drive motor controls all packer functions through our own mechanical clutches. Mechanical backup control standard.
5. Operation is by simple stop/start buttons. Simple electrics with no pneumatics. The PLC display screen shows egg counter and status / fault indication.
6. Integrated stamping standard to suit all types of stamps, easily accessible on linear slide.
7. All stainless steel construction with maintenance free chains standard for washdown capability. Maintenance free linkages also standard. No routine lubrication needed.
8. Traystacker option from 8 to 20 stack takeaway for further labour saving.
9. Handles all known paper and plastic trays with minor adjustments.
10. Standard delivered with a 90 degrees curve takeaway.
11. Easy installation while the packer, denester and take-away curve is build up as one part.

Technical Data:

FP40 – 13,000 eggs/hour

FP60 – 21,000 eggs/hour

FP110 (twin x FP60 packer) – 40,000 eggs/hour

Electrical – 1 drive motor 0.18kw variable speed

Supply – 230 Volt Single Phase, 50 Hz

Labour Requirements:

FP40 – 1 Operator

FP60 – 2 Operators or 1 Operator with Traystacker

Optional Extras:

Long or double infeed.

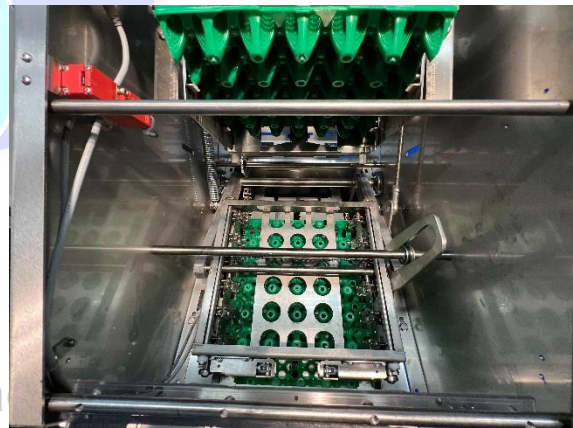
90 or 180 degrees take-away

Egg Stamps or egg Printer

Traystacker with various take-away possibility's



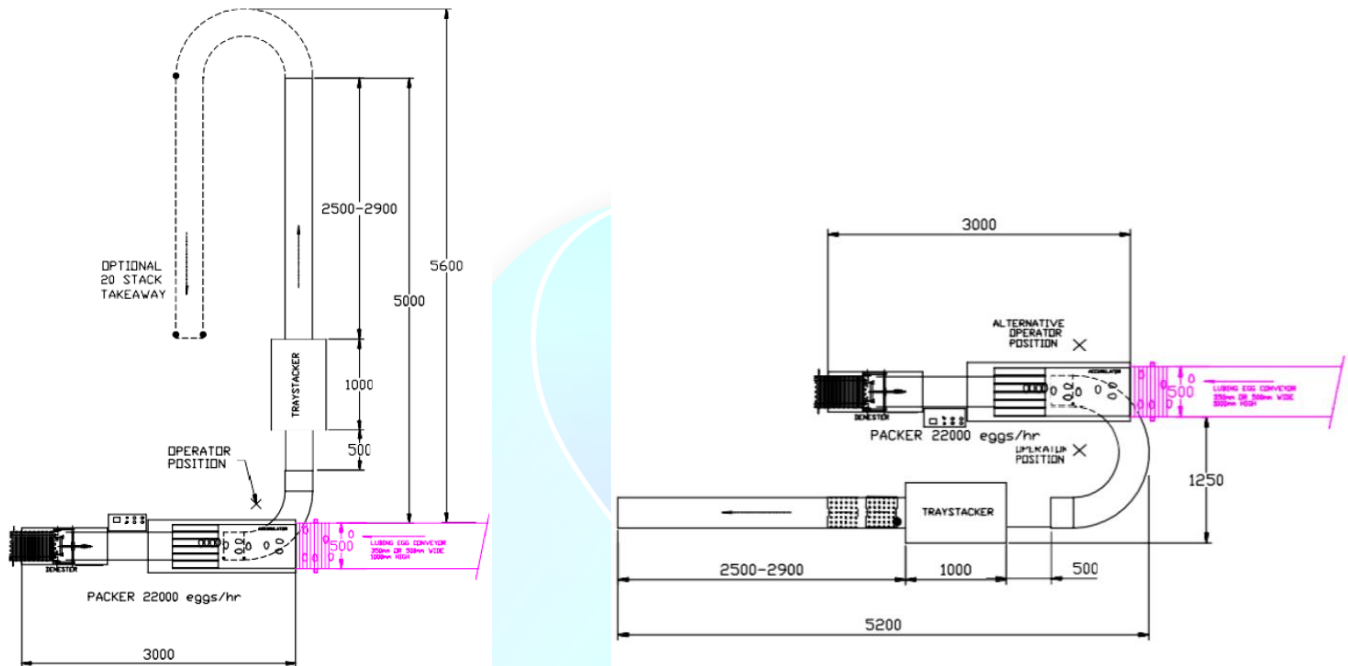
Moving infeed guides. Easy adjustable gates for different egg-sizes.



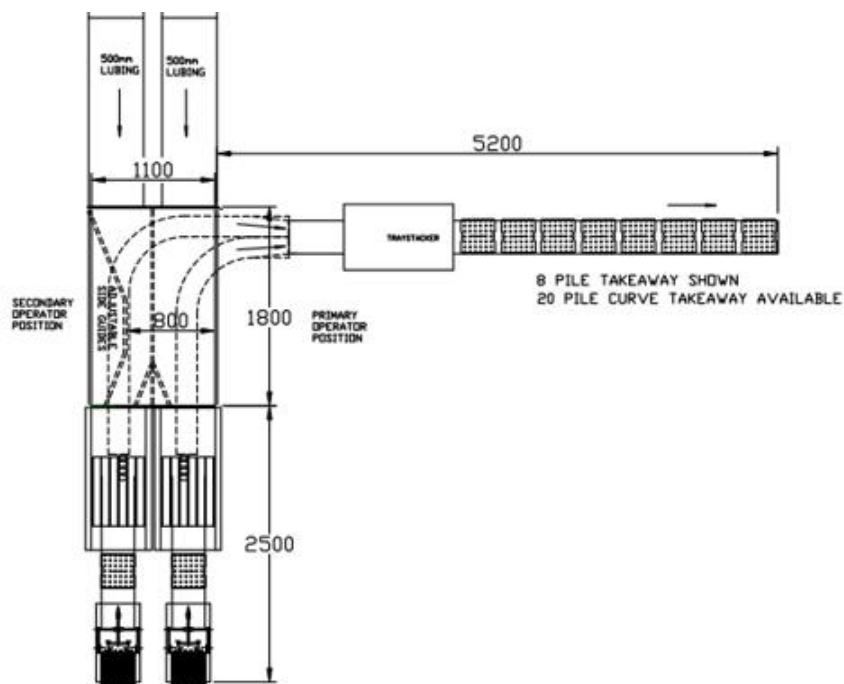
Denester for all type of plastic and paper trays.

Measurements:

The Ovapack can be equipped with a left or right take-away. The transport belts can be completely adapted to the wishes of the customer. The take-away can be driven electrically or connected mechanically to the Ovapack.



In case of a double infeed you can choose to connect two packers together. At the double setup the take-away is provided with a mechanical synchronization. The two belts are connected to one Ovastack



OVAPACK



INFEEED & ROLLERS

Clear overview of eggs for easy quality control .



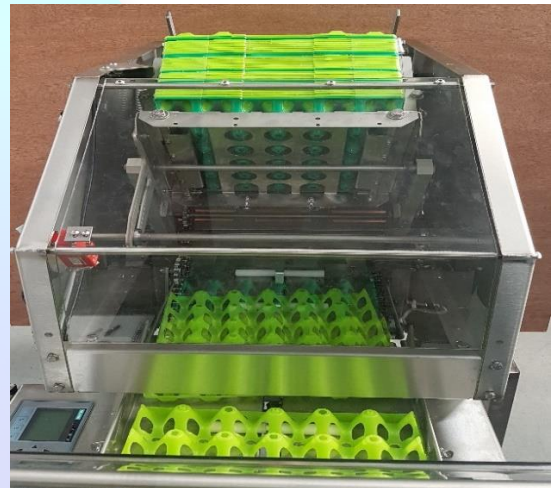
ORIENTATION GRIPPERS

Positive and gentle orientation with grippers and turn bar for a very high % points down.



PACKING HEAD

Flexible cups for gentle egg transfer to tray.



DENESTER

Can denest all paper or plastic trays.



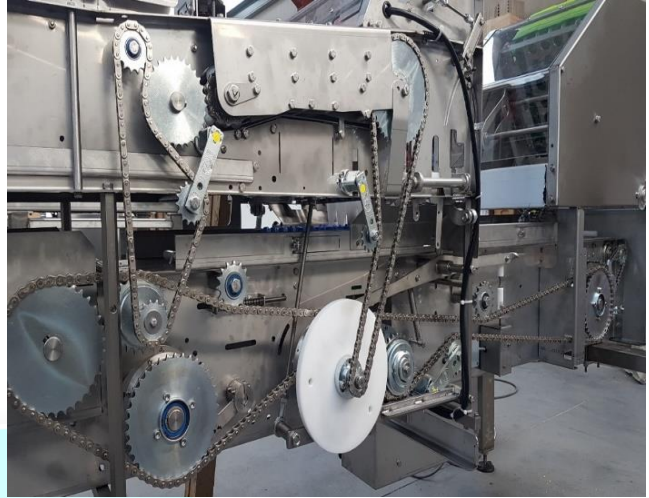
INTEGRATED STAMPING

Stamps mounted on linear slide, printing also available





REVERSE FLOW LANE for final inspection with
Right and left hand layout available.



DRIVE MOTOR plus clutches controlling all
Machine functions. Maintenance free chains.



ELECTRICAL COMPONENTS

- 230Vac 1 Phase connection.
- Industrial PLC and variable speed drive with simple stop/start buttons.
- Egg counter and errors on the display.
- Trustable and simple components.